



KORMAN 和明

SHANGHAI
BONDED Warehouse



KORMAN LOGISTICS CO., LTD

上海和明物流有限公司

3/F., Block 4, No 253, Ai Du Road, Pilot Free Trade Zone, Shanghai, Zip code: 200131

上海自由贸易试验区爱都路253号4号楼3 邮编 200131

5 km from Shanghai Waigaoqiao Terminal

20 km from Shanghai City Center

40 km from Pudong International Airport

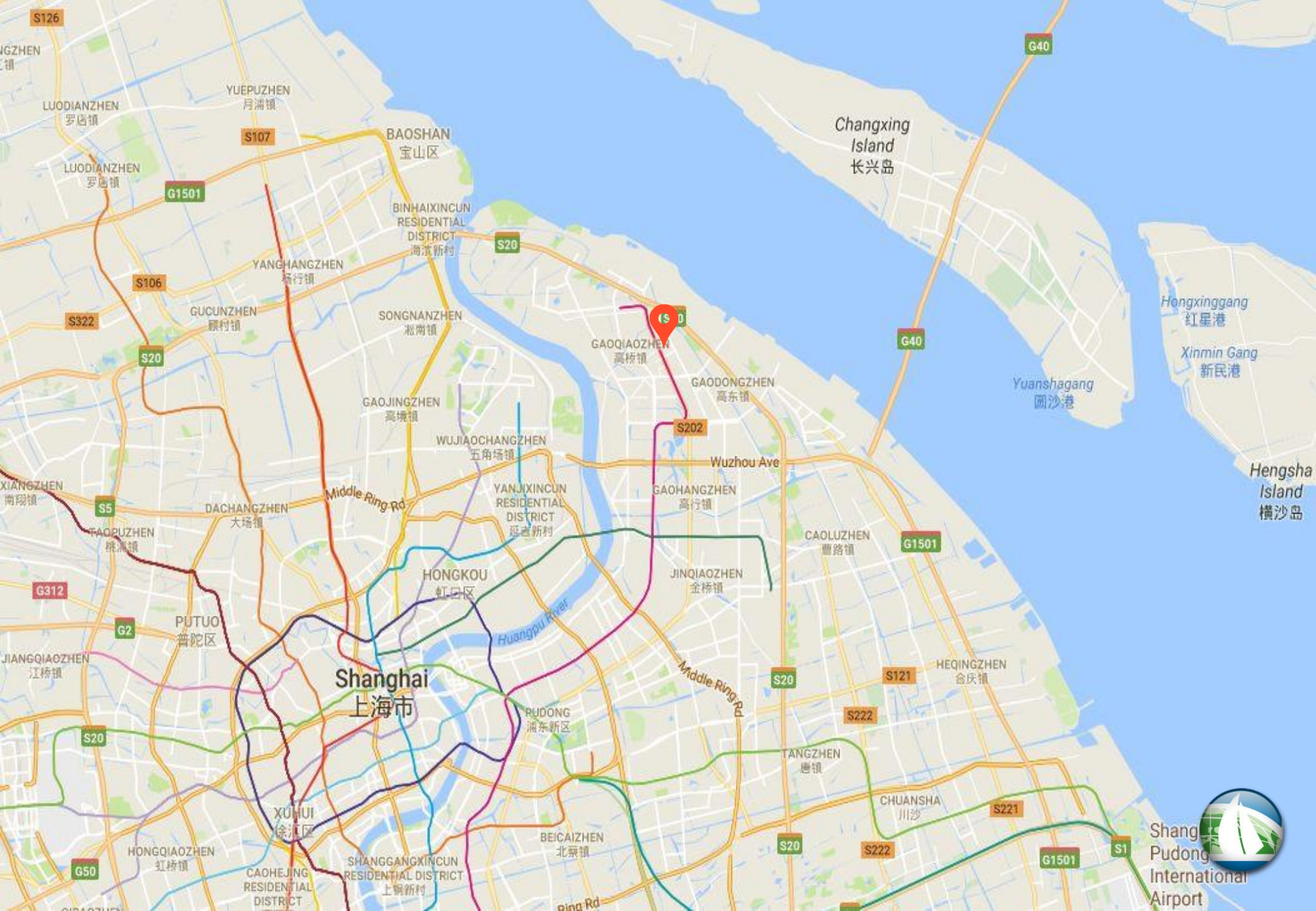
90 km from Shanghai Yangshan Terminal



STRATEGIC

LOCATION





Our flexible warehousing solutions include a wide range of services to meet your business needs, enabling you to reduce costs and increase efficiency. Our focus on **QUALITY SERVICES, SAFETY and SECURITY** give you the maximum **SATISFACTION and PEACE OF MIND** that your goods are well taken care of.

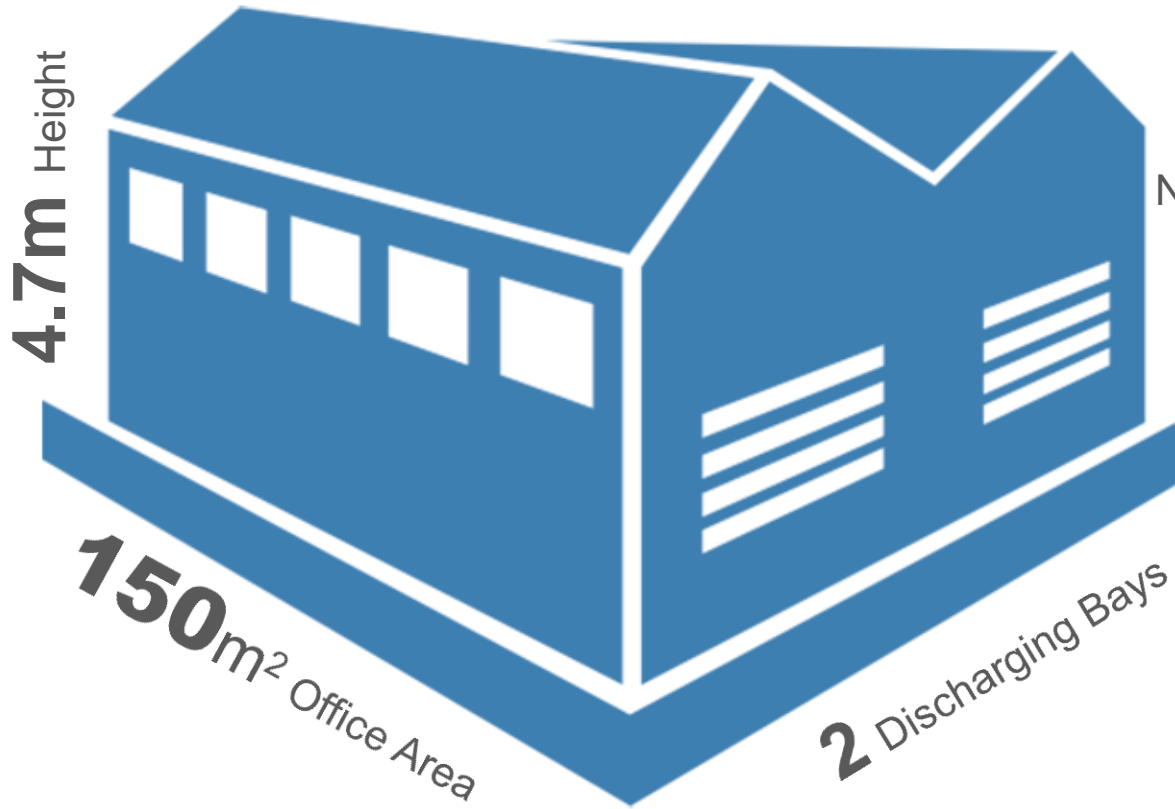


We made warehouse spaces FUNCTIONAL and EFFICIENT, while providing a SAFE and COMFORTABLE environment for the workers to increase PRODUCTIVITY and CONTROL, MINIMISE OPERATING COSTS, and improve CUSTOMER SERVICE.



CAPACITY

2000m² Total Floor Area



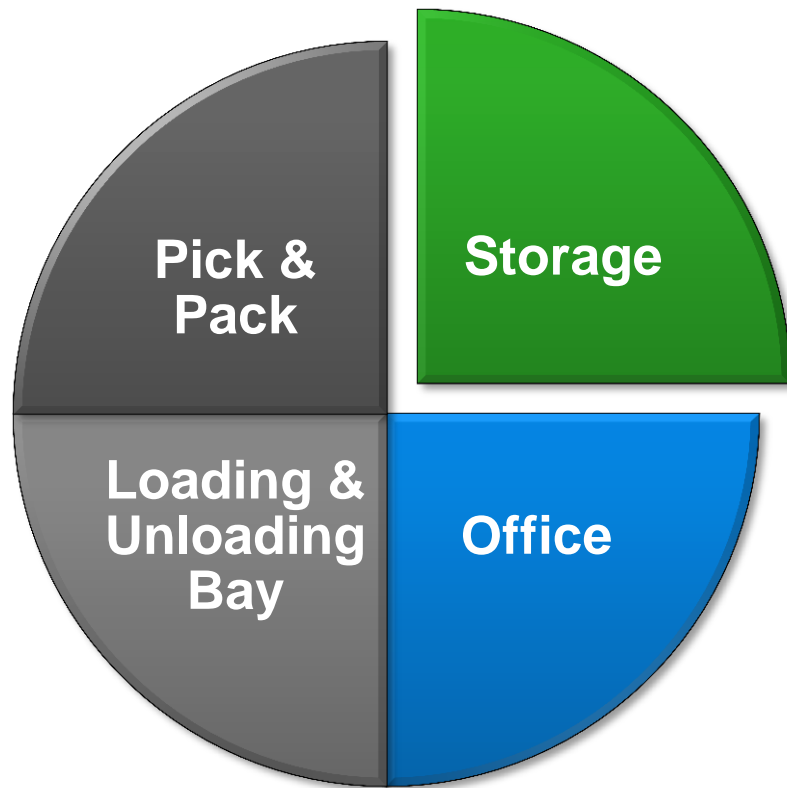
1200m²

Non-temperature Controlled Storage

400m²

Temperature Controlled Storage





Our warehouse is configured to be easily adapted and scaled to handle rapid changes in business growth and module.

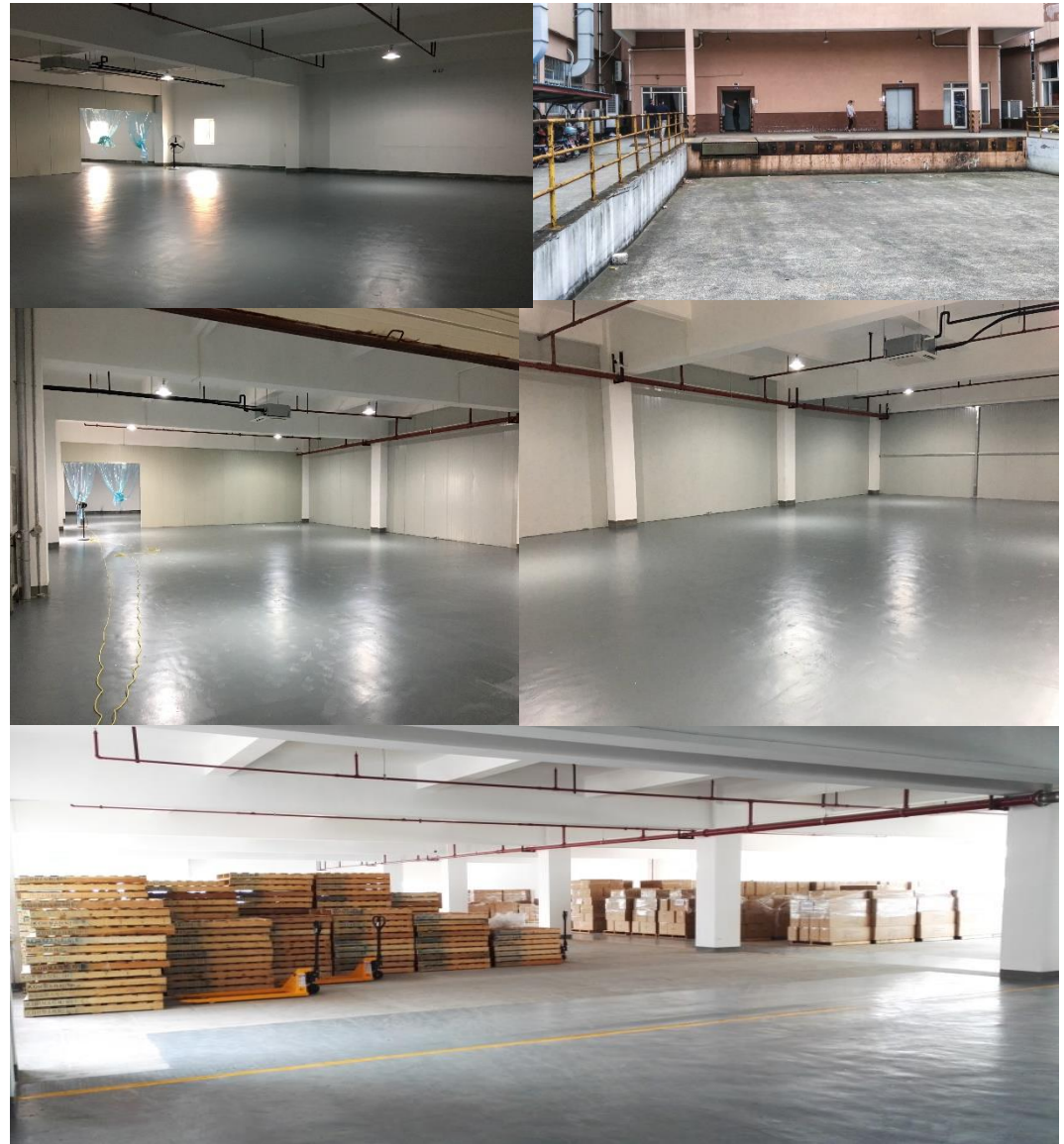
We optimise layout while providing adequate and efficient circulation paths for personnel, storage, office, loading dock and light industrial handling.



CONFIGURATIONS



- ❑ DESIGNATED sectors catering to different types of storage.
- ❑ EPOXY COATED FLOORING that prevent contamination and minimise dust build up.
- ❑ LED ENGERGY SAVING LIGHTING to reduce carbon footprint and to provide adequate lights to entire storage area.
- ❑ CLEAR MARKING at each storage zone to create order and efficiency.
- ❑ Ample space to provide ADEQUATE CIRCULATION paths for personnel and handling equipment.





STRUCTURE
GROUND FLOOR LOADING BAY



We know that no two businesses are the same, and this is reflected in the tailored storage approach we take to each customer.



- Short and Long-term Options
- Customized Storage

1200m²

General Storage Area

- ☐ Bulk Storage
- ☐ High Rack Storage
- ☐ Palletized Storage
- ☐ Temperature Controlled Storage

400m²

Temperature Controlled Storage

STORAGE

MODERN · CLEAN · SECURE





STORAGE





STORAGE





150m² Office Space

We have a team of professionals and well trained personnel to meet all your logistic needs.

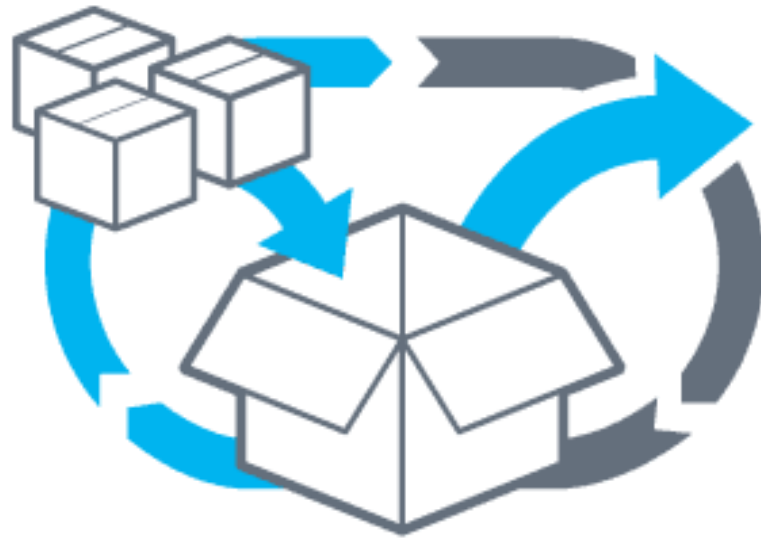
On site advantage also gives us the edge to make timely response to clients' questions and keeping our clients informed of the goods status.



the BRAIN 

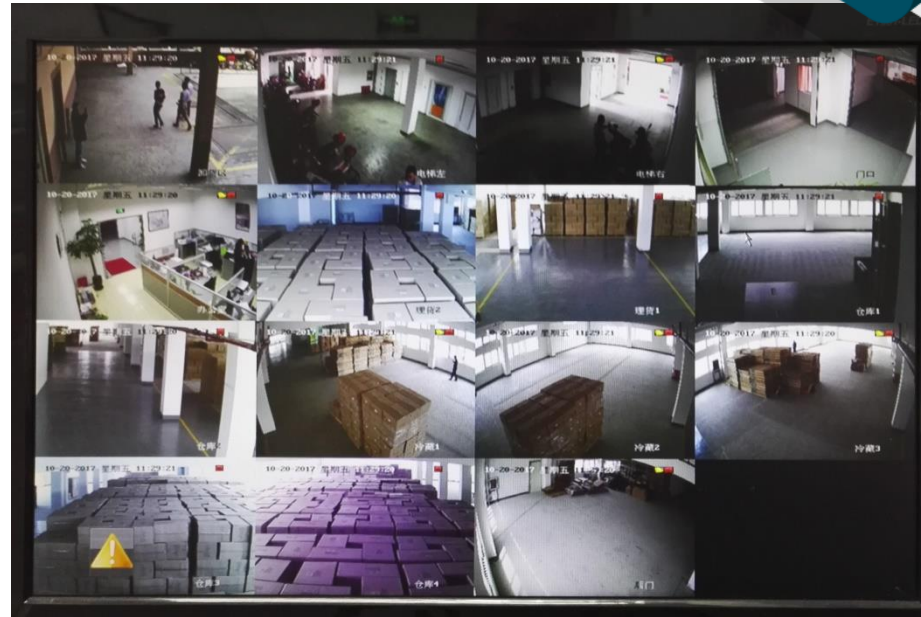
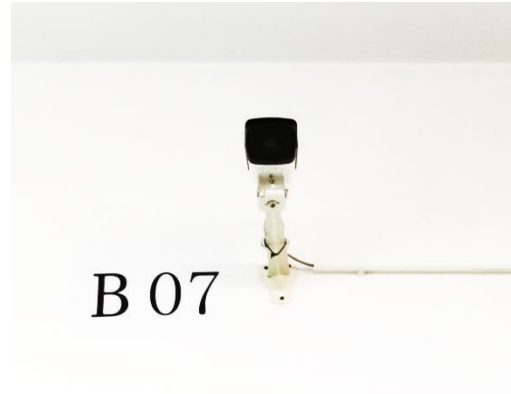


We recognize the importance of accurate and efficient shipments that will arrive on time to your customers. Our flexible and adaptable pick and pack service is available for a variety of products that come in all shapes and sizes, as well as same day turnaround if required. It is designed to meet your specific order requirements and order fulfilment needs.



PICK & PACK 

- 🔒 PHYSICAL BARRIERS and DETERRENTS that guard against unauthorized access.
- 🔒 24/7 ALARM SYSTEM and VIDEO SURVEILLANCE CAMERAS (CCTV).
- 🔒 24/7 SECURITY OFFICERS presence and FOOT PATROL within warehouse perimeter.
- 🔒 External and internal windows, doors, gates and fences are securely fitted with PROPER LOCKING DEVICES.
- 🔒 Adequate LIGHTING throughout entire building.

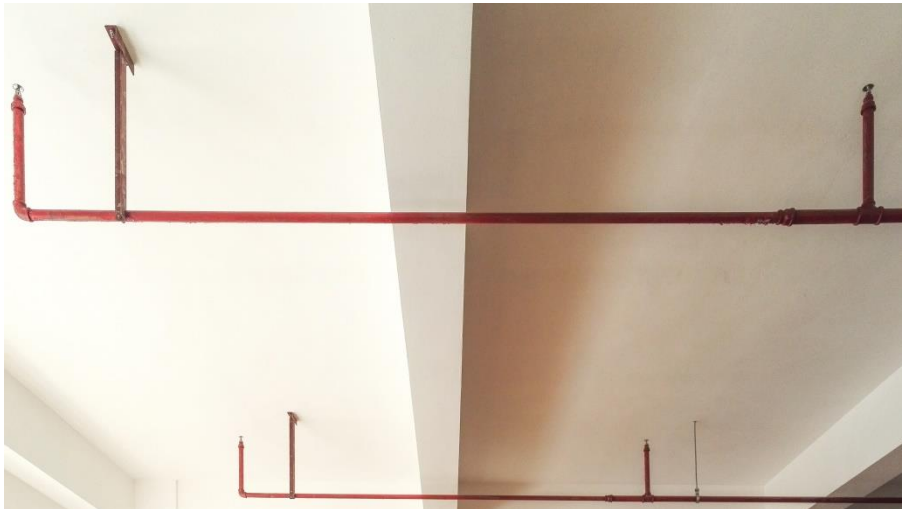


SECURITY





- ⚠ Adequate CAUTION SIGNS to warn potential hazard ahead.
- ⚠ Well equipped with adequate DRY POWER FIRE EXTINGUISHERS at all visible and easily accessible area.
- ⚠ SPRINKLER SYSTEM
- ⚠ CLEAR MARKING at each storage zone to keep personnel away from dangerous areas, mitigate hazards and improve safety.
- ⚠ Strictly NO STORAGE of inflammables, and explosion-prone objects.

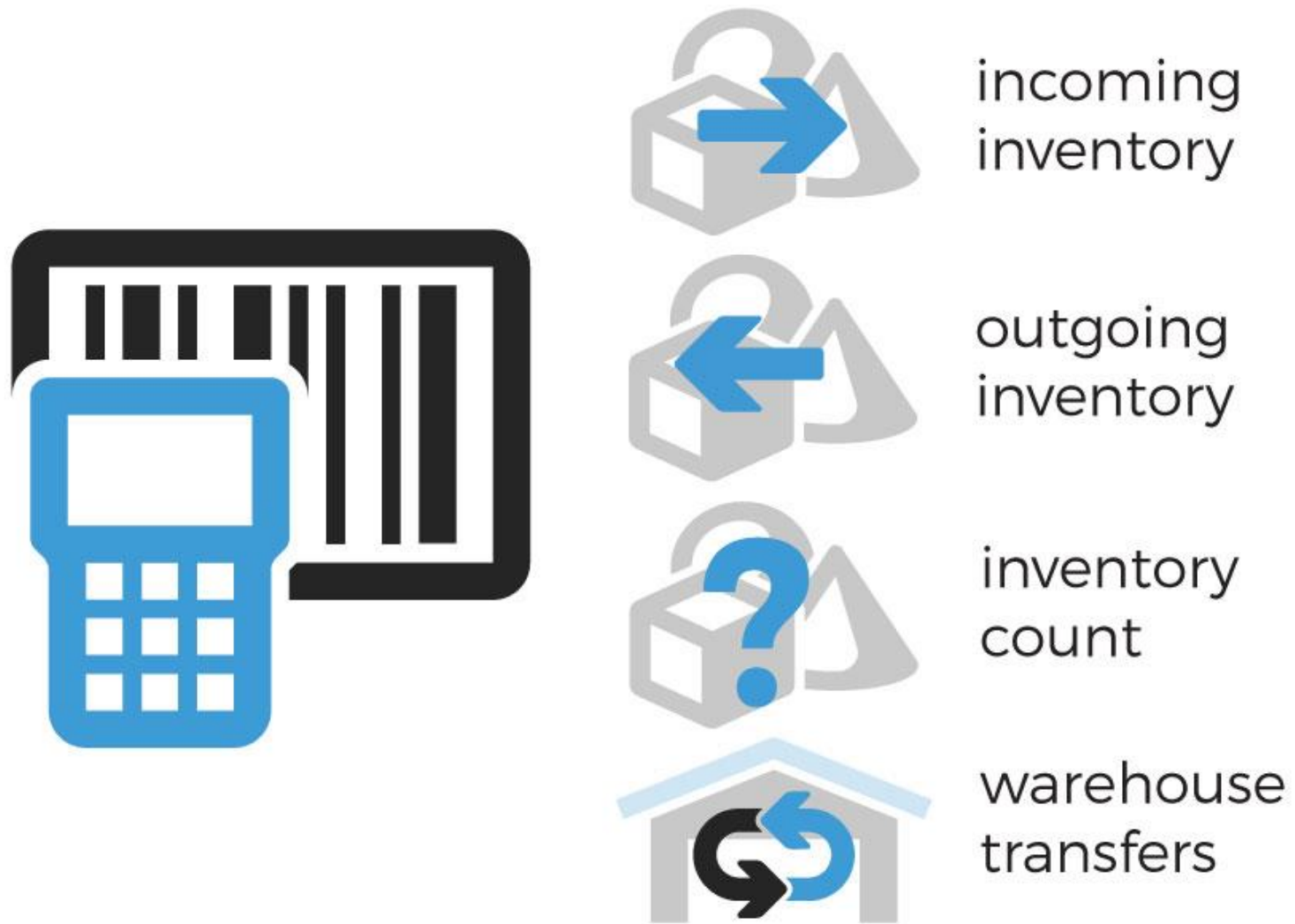


SAFETY 

MATERIAL HANDLING EQUIPMENT

We strictly use electric forklifts to limit carbon dioxide emissions and equipment that is environmentally friendly. We make sure your products are stored in a clean and minimal dust facilities.



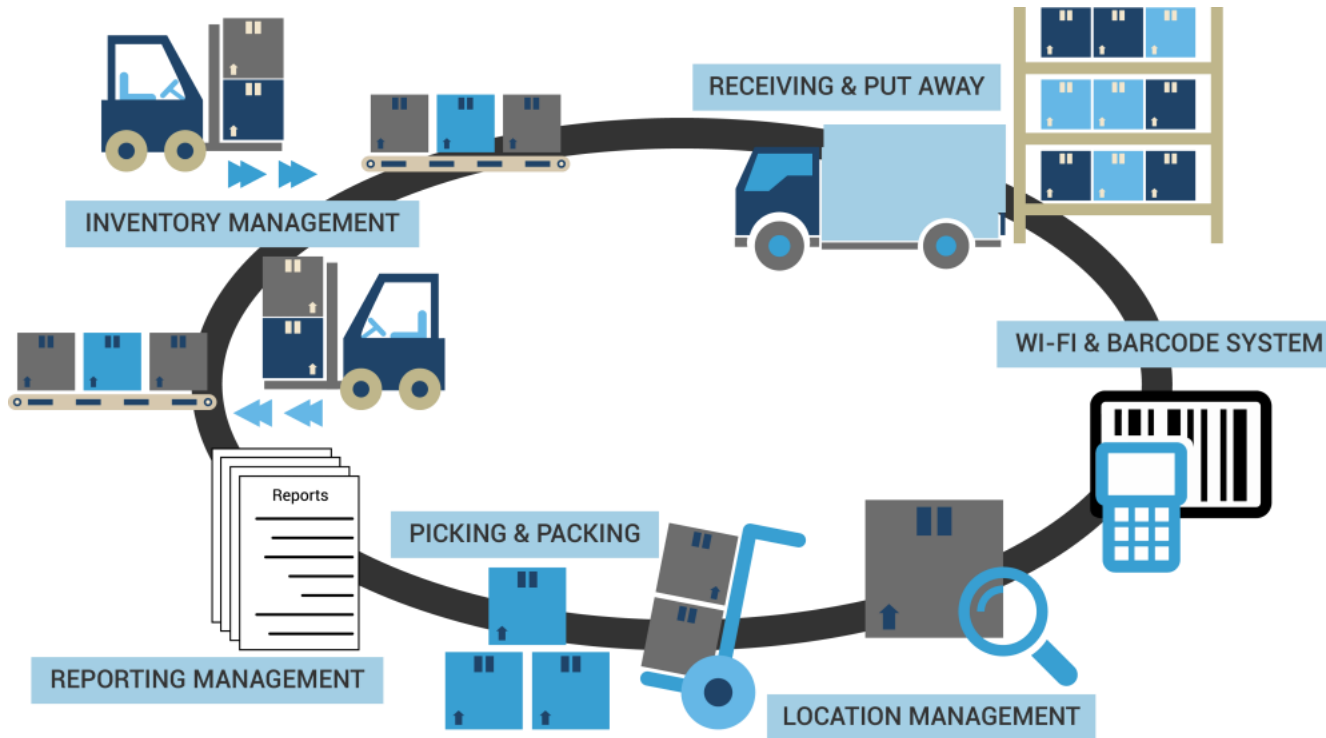


BAR CODE SYSTEM



**PRECISE
SECURE**

**PRODUCTIVE
INTELLIGENT**

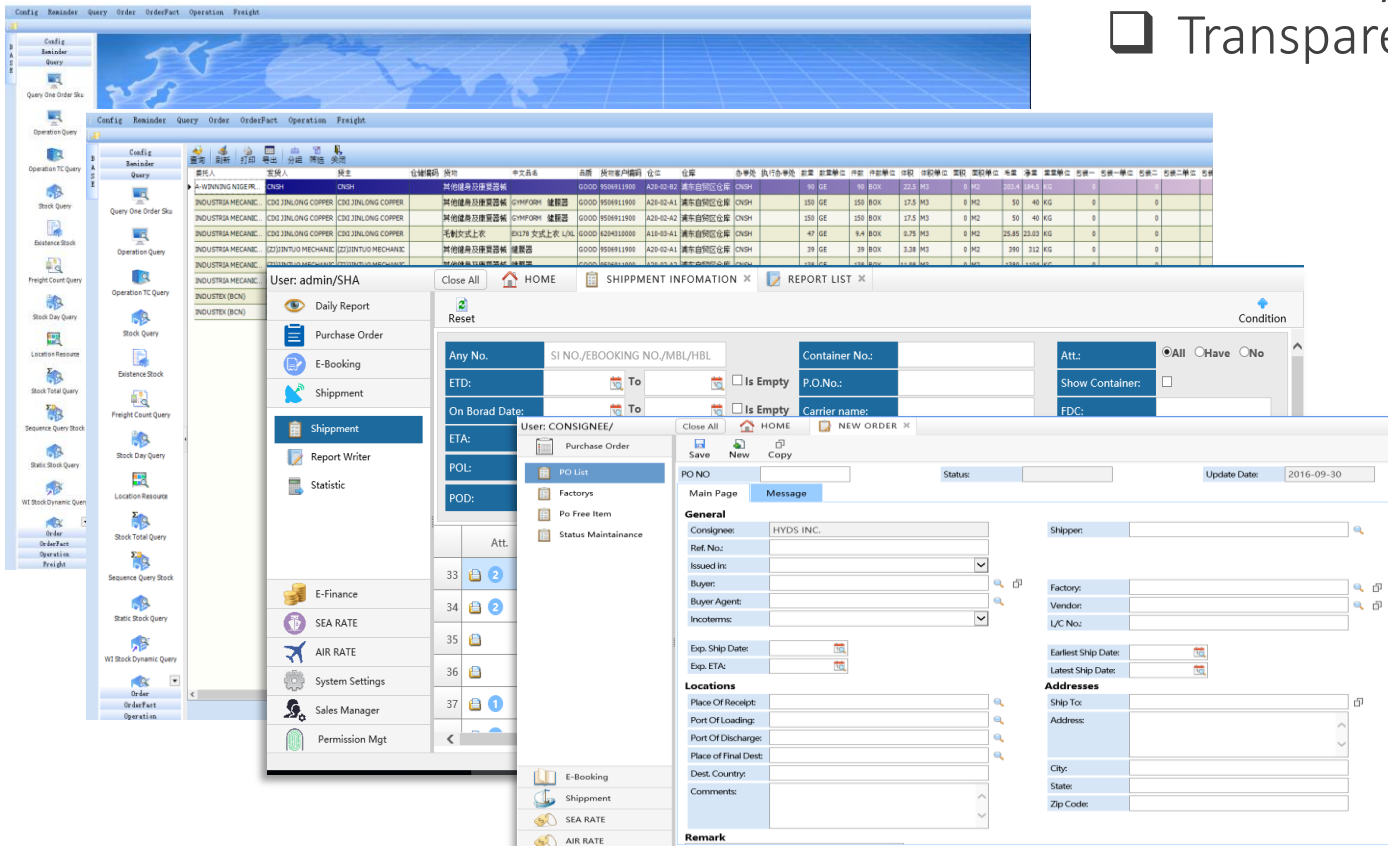


INVENTORY CONTROL



WAREHOUSE MANAGEMENT SYSTEM

- ☐ Workflow Management
- ☐ Radically Reduce Paperwork
- ☐ Real Time Tracking
- ☐ Swift Cargo Movement
- ☐ Inventory Accuracy
- ☐ Transparency And Visibility



TOTAL LOGISTICS SERVICES

Bonded Warehouse Storage
Cargo Management
Customized Logistics Services
Trucking and Transportation
Cargo Distribution
Cargo Pick & Pack
Repacking, Labeling & Sorting
Professional Customs Clearance
International Freight Forwarding Services



[illegible]



KORMAN 和明

one stop solution across the world

www.korman-group.com



THANK YOU

谢谢

Cảm Ơn Bạn

Terima Kasih

ขอขอบคุณ